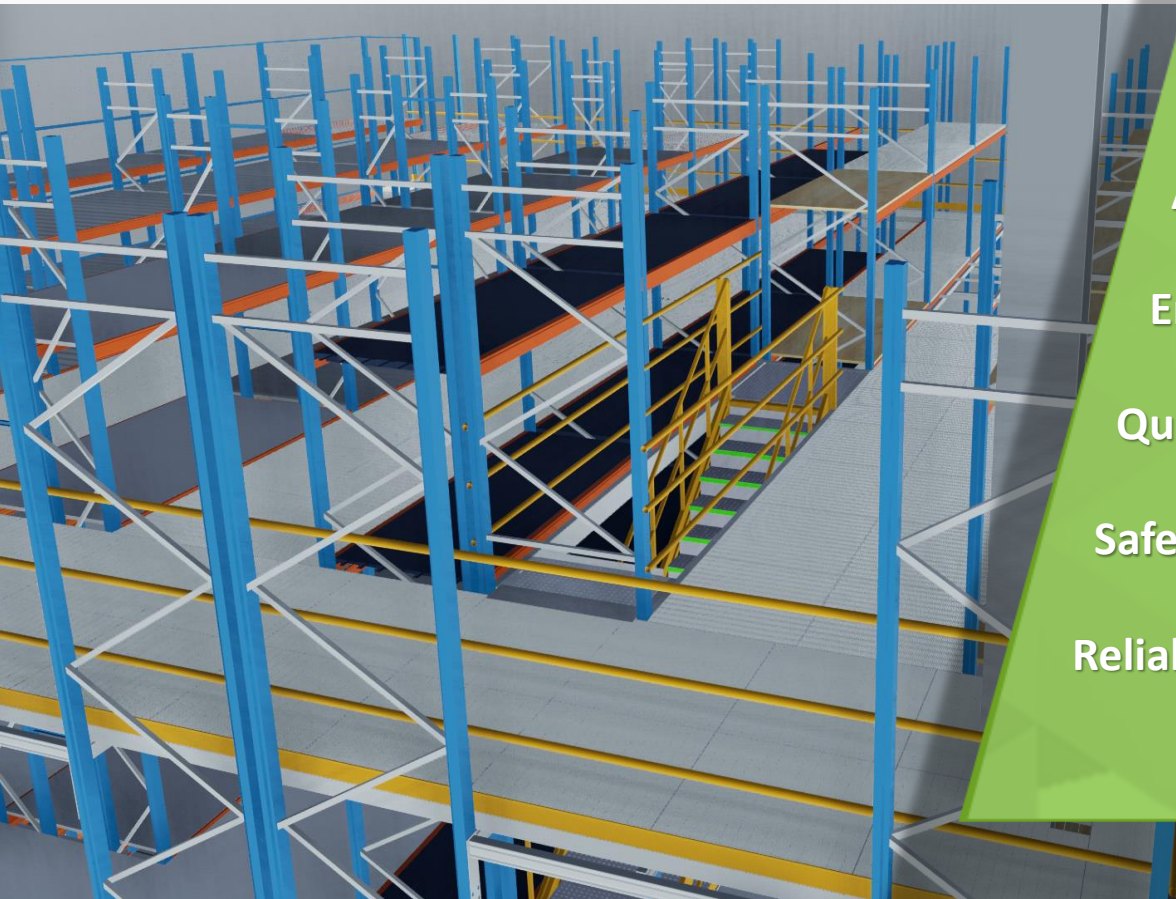


Godrej

ALTIUS

THE BEST INDUSTRIAL SHELVING



Aesthetic

Ergonomic

Quick to Assemble

Safe

Reliable

About Us

Godrej Storage Solutions is a part of the renowned Godrej group, a global conglomerate with businesses ranging from consumer products to aerospace engineering. We are a pioneer, visionary and market leader since the last 6 decades in the field of warehouse storage systems in India. With innovation, adaptability and reliability as our core strength, we have created more than 200 million square feet of state-of-the-art storage systems for various sectors ranging from E-commerce to 3PL since the beginning of this century.

Our culture of continuous learning coupled with decades of experience in the field of intralogistics has enabled us to design best-in-class solution to serve all storage needs.

ABOUT GODREJ ALTIUS

GODREJ ALTIUS is the best shelving system that brings maximum value to our customer's business. Our systems ensure a safe work environment with an improved operator and material safety. Our shelving systems are ergonomically designed to provide the most comfortable working environment for warehouse operators. This range while ensuring the highest levels of functionality also focuses on aesthetics thereby creating a vibrant workspace. We have also consciously worked upon reducing project turnaround time by optimizing the design and simplifying installation efforts. Our range of uprights is strengthened to offer the best solution to our customer's need. Our twin top step beam profile (patented) creates a safe storage for your SKUs and increases the cubic space utilization.

Our multitier systems are designed to be integrated with conveyors, fire safety etc., to create an efficient and safe warehousing experience. Our wide range of accessories caters to specific needs of different segments thereby creating an effective storage system. GODREJ ALTIUS is designed to build an ideal warehouse that offers a safe, hygienic and vibrant environment.

APPLICATIONS

- 3PL (Third Party Logistics)
- Apparel
- Automobile
- Bulk Document Storage
- Energy/Power/ Oil & Gas
- Engineering
- E-retail
- FMCG
- Pharma
- Physical Retail
- Food & Beverages
- Consumer Durables
- Chemical & Paints

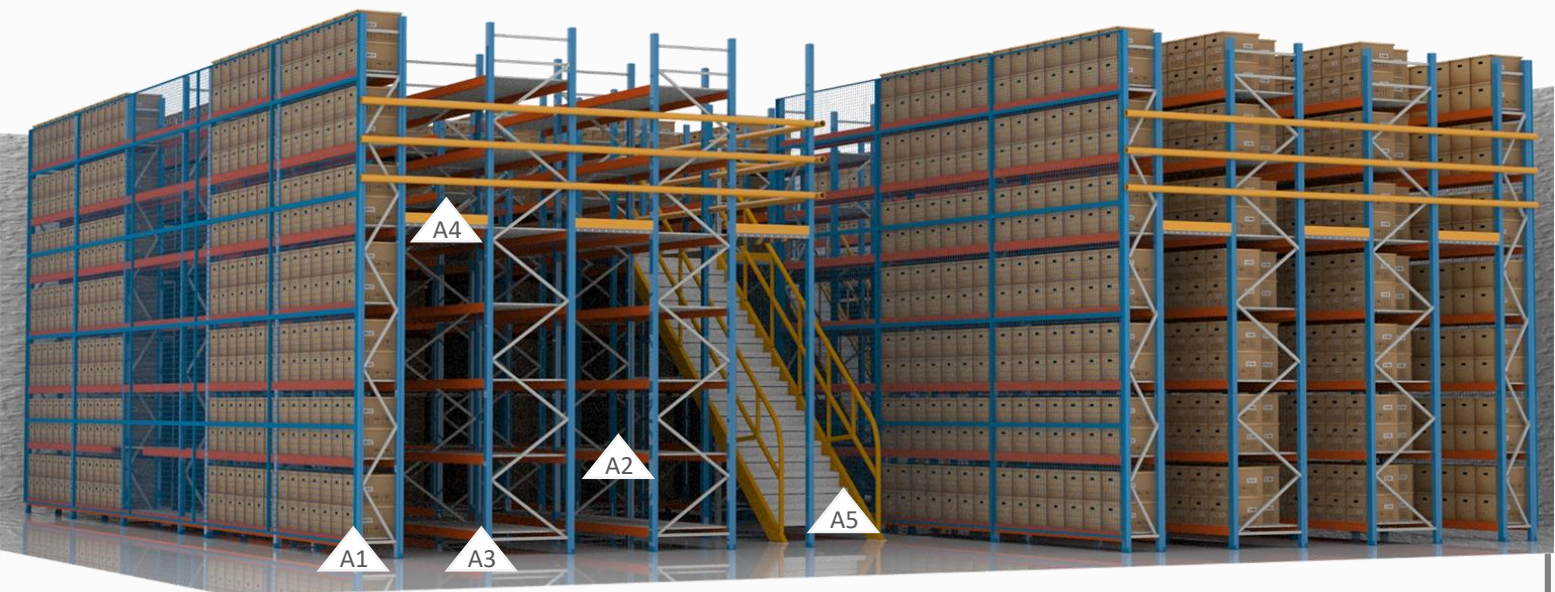
FEATURES

- Modularity through a wide range of components enables future expansion that fits seamlessly to the existing system
- Flexibility to be configured to any size best suited to the available height and layout.
- Design capability to offer the most effective solution for any load / dimensions (SKUs).
- Optimized for effective cubic space utilization
- Designed to meet specific requirement with capability to handle load per level up to 4 ton (Span up to 3000 mm)
- Rigorously tested walkways to handle trolley and HPT movement and provide ventilated and noise free working environment
- Optimized design ensures material and operator safety
- Designed to deliver unmatched aesthetics, thereby creating a vibrant workspace.
- Designed for integrating conveying system for lateral or vertical movements.
- Designed to comply with FM global norms for fire safety
- Comprehensive range of accessories to facilitate storage of any type of SKU



ALTIUS TITAN

Godrej Altius Titan shelving range is based on our beam design configuration. The system is designed to handle heavier discrete SKUs (300 to 4000Kg UDL) which can either be stored in cartons, bins or directly. Our indigenously developed Step Beam and Upright profiles can be configured to build multitier system up to 10 levels. The system can be integrated with conveyors, VRCs and loading gates to improve throughput and enhance warehouse efficiency.



Basic Elements

- A1. Upright
- A2. Beam
- A3. Base Plate
- A4. Walkway
- A5. Staircase

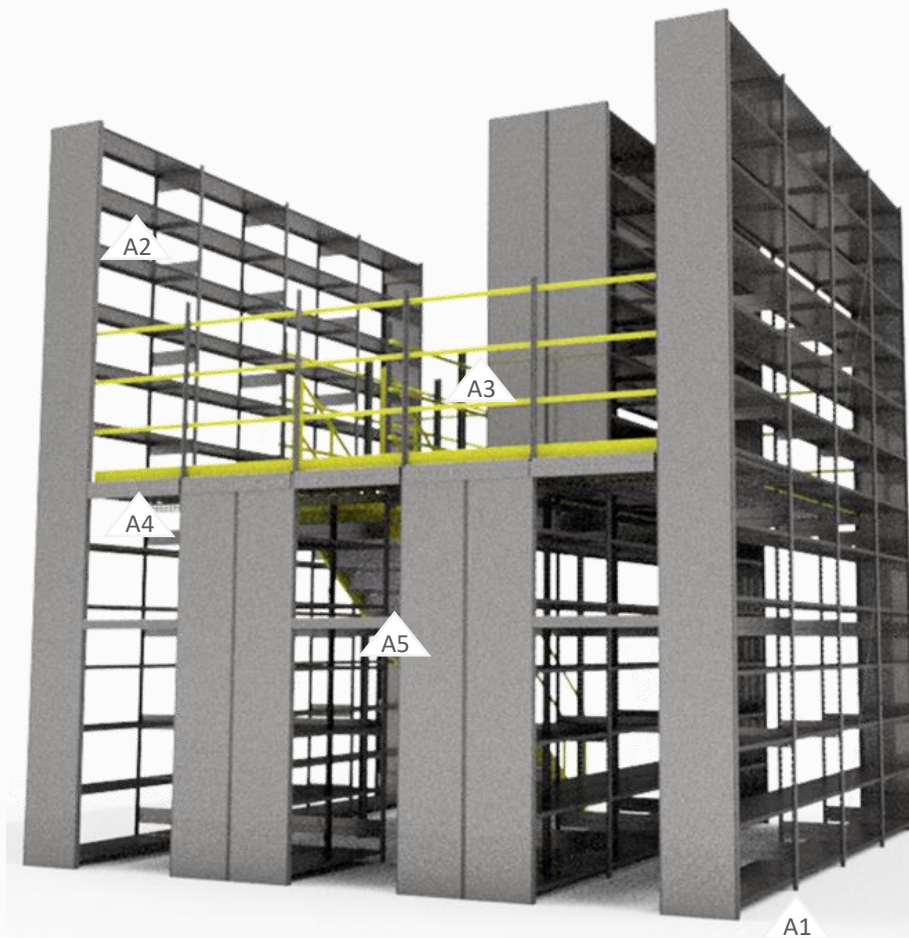
Highlights

- A combination of **24 variants of step beam and 12 variants of Uprights**
- **Component level safety integration** to enhance material and operator safety
- **Railing uniformity** improves system's aesthetic appeal
- **Easy and quick installation** with optimized design



ALTIUS LITE

Godrej Altius Lite shelving range is based on our panel design configuration. The system is designed to handle light to medium SKUs up to 350 KG per level which can either be stored in bins, cartons or directly. Our wide profile of upright enable us to create a strong and sturdy storage system thereby increasing the storage efficiency by utilizing vertical space.



Basic Elements

- A1. Upright
- A2. Panel
- A3. Railing
- A4. Walkway
- A5. Staircase

Highlights

- A combination of **12 variants of Uprights**
- **Galvanized panels** to handle load up to 350 kg UDL
- **Compact design**
- **Component level safety integration** to enhance material and operator safety
- **Easy and quick installation** with optimized design

SHELVING SUPPORT ACCESSORIES

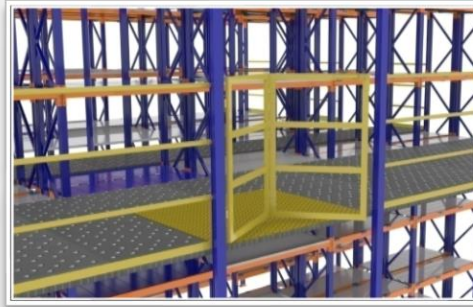
Our solutions are highly customizable to any requirement. SKU type, SKU quantity, rotation frequency, manpower and many other factors are considered to design the suitable using our wide portfolio of HDS support accessories.

MATERIAL ACCESS

A good shelving system is only as good as the ease of material access, our team of engineers have designed various material access accessories to enable the best shelving experience. Our design are inline with EN regulations while also consider ergonomic factors to enable a safe and effortless storage and retrieval operation, thereby improving warehouse throughput.



Staircase



Collapsible Gate



Swivel Gate

The shelving system can be provided with one or more staircases, subject to local building and fire regulations. Various gate mechanisms from manual collapsible gate to motorized swivel gate to load pallets safely on any level of the system. Level-to-level movement of bulk goods through Vertical Reciprocating Conveyor (VRC) and discrete movement of goods through conveyors.



Motorized Swivel Gate



Vertical Reciprocating Conveyor

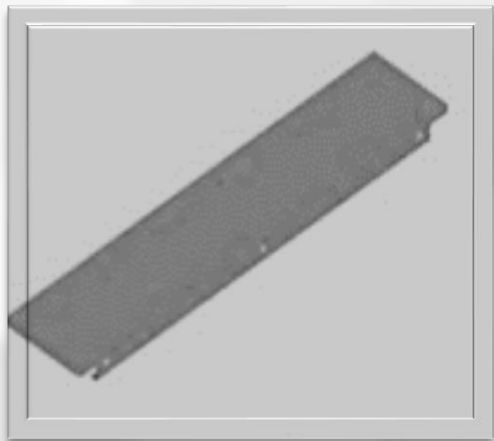


Conveyors

All material access accessories are carefully designed to improve throughput and reduce physical strain on operators.

DECKING PANELS

Decking is an integral part of a shelving structure; it creates an infill between beams to store SKU of various dimensions. Based on the type and dimensions of SKUs various, we offer a wide variety of decking panels to suit the need. Choosing the right type of decking is important to meeting your storage needs.

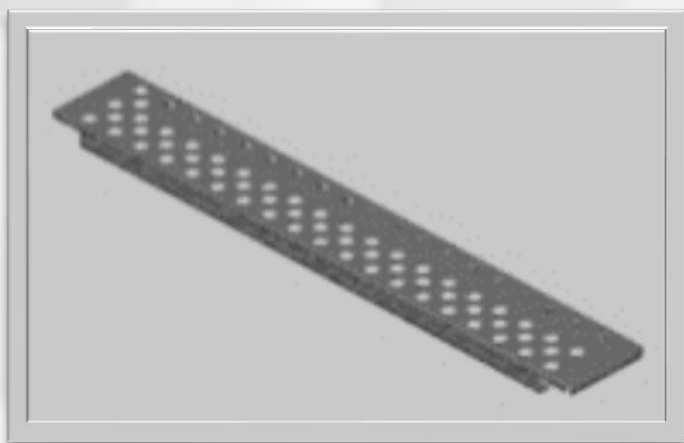


6 Bend Steel

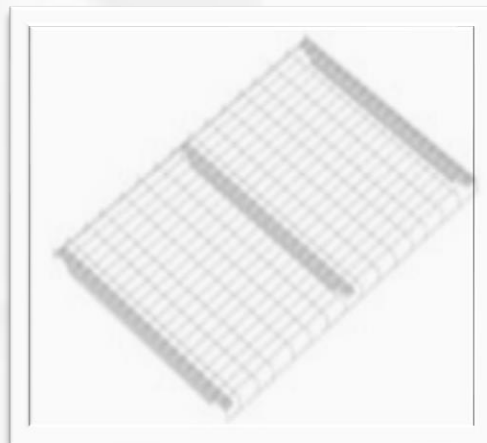


Wooden

Based on the type of SKU and other factors such as ventilation, fire safety etc we can choose from a wide variety of plain and perforated panels.

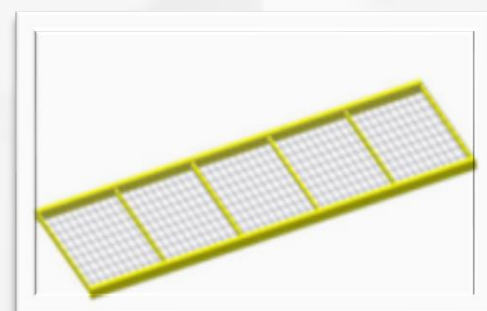


Perforated Steel



Mesh

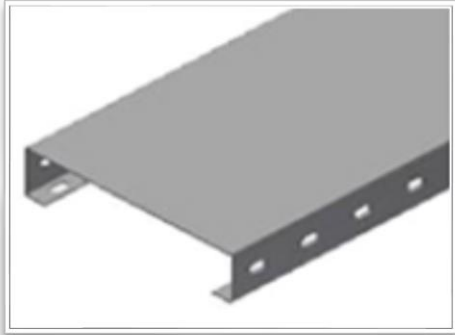
Different decking type will have its own maximum weight load capacity. Apart from the load factor, we also consider durability, ventilation, fire safety etc while designing your storage system. Our decking options offer extra flexibility for warehouses with various size, type and weight bearing loads.



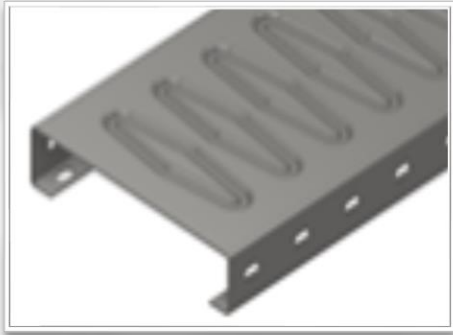
Light Duty Mesh

WALKWAY PANELS

Multitier shelving system increases the storage capacity of your warehouse or manufacturing facility by utilizing vertical space. We offer a wide variety of walkways and accessories creating an extensive range of solutions to meet our customer needs. Our walkways are carefully designed to be integrated with conveyors, lights, sprinklers, handrails, and more to provide a safety and efficient storage system.



Plain



Embossed

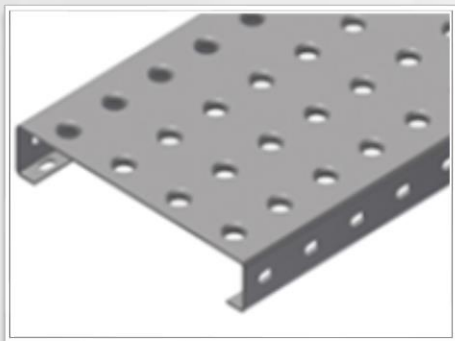


Tube Welded

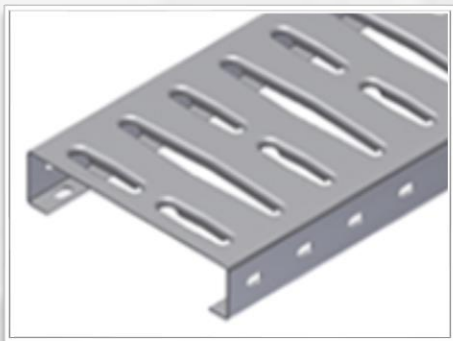


Wood

Based on the load requirement, ventilation, lighting and other safety element, we offer a range of plain and perforated panels. Our solutions are tailored to enhance our customers shelving experience and increase profitability.



Perforated - Hole



Perforated - Slot



Grating

The panels are designed to improve warehouse efficiency, reduce operator fatigue and increase productivity and enhance warehouse aesthetics.

ACCESSORIES

Our wide portfolio of accessories transforms a single storage structure into a efficient and productive system which enables our customers to improve their storage efficiency and reduce turnaround time.

DIVIDERS

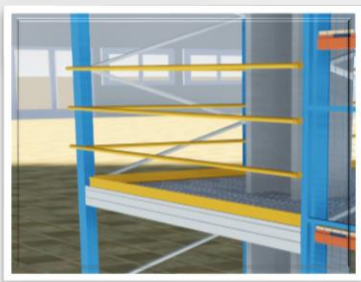
- | | | |
|--------------------------------|---------------------|-------------------|
| 1. Adjustable Plain Metal | 7. Mid Divider | 9. Plastic Mesh |
| 2. Adjustable Perforated Metal | a. Rod Type | 10. WPC Divider |
| 3. Adjustable Mesh | b. Hook Type | 11. Glass Divider |
| 4. Fixed Plain Metal | c. U Type | 12. Loop Divider |
| 5. Fixed Perforated Metal | d. Frame Type | 13. Divider Rod |
| 6. Fixed Mesh | 8. PP Sheet Divider | 14. Divider Bar |

CLADDINGS

1. Plain Sheet
2. Perforated Sheet
3. Mesh
 - a. Light Mesh
 - b. Flat Mesh
 - c. Framed Mesh
4. PP Sheet
5. Nylon mesh
6. Simple strap



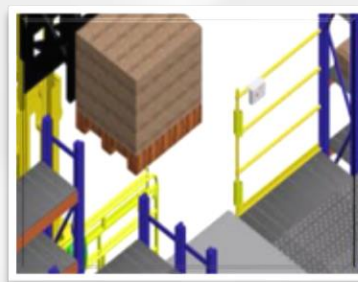
SUPPORT & SAFETY ACCESSORIES



Railing



Load Check Point



Gate Closure Alarm



Impact Resistant Guards

- | | |
|------------------------------|------------------------|
| 1. Aisle Placard | 8. Amnesty Bins |
| 2. Safety Signages | 9. Ladders |
| 3. Upright Guard | 10. Ladder Support |
| 4. Back Stopper | 11. Bin Support |
| 5. Movable BFR | 12. Side Strip |
| 6. Gap Cladding | 13. Cabinet Shelving |
| 7. Fire Extinguisher Bracket | 14. Drawer in Shelving |

THE GODREJ ADVANTAGE



State-of-the-art, high-capacity automated manufacturing facility



Comprehensive in-house testing facility for assured quality



Tested Seismic Racking



13 branches & 75+ channel partners serving all locations across the country

Other Solutions



Mobistack – Mobile Shelving



Mezzanine Floor



Conveying Systems



Selective Pallet Racking



Mobile Pallet Racking

Best in Quality & Innovative Design

of steel of engineering of solutions

Your Reliable Partner

Quick & Safe Project Execution

committed to safety timely handover

Life Cycle Support

rack audit repair & modification relocation

Our solutions, perfected with years of experience and our highly trained installation team, backed with world-class production facility enable us to provide our clients with superior storage solutions.

You are one call away from your perfect racking partner

☎ [1800-419-7060](tel:1800-419-7060)
 ✉ storage@godrej.com
 🌐 www.godrej.com
 📍 #1, SIDCO Industrial Estate, Ambattur
 Chennai, Tamilnadu, India - 600098

Know More...
[GodrejStorageSolutions](#)

